



# ***THE WHEELS NEVER STOP TURNING***

*Camoplast midrollers  
for the Caterpillar Challenger  
Rowcrop and Tillage Track Tractors*



***camoplast***






Introducing midrollers for the Caterpillar Challenger Rowcrop 35-55 and Tillage 65-95 Track Tractors.

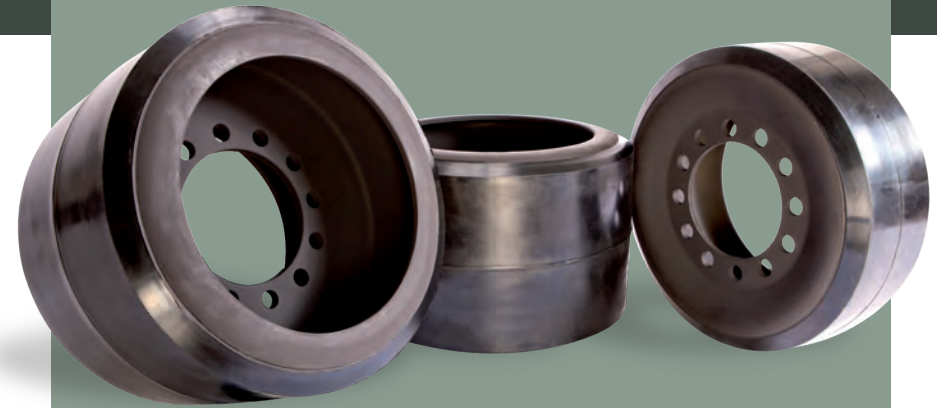
## ***CAMOPLAST MIDROLLERS WILL KEEP YOU ROLLING EVEN LONGER***

### ***NEW CAMOPLAST MIDROLLER FEATURES:***

- Improved current production rubber compounds
- Increased wheel width improves uniformity of track tread wear, resulting in a smoother ride
- All-new wide midroller option for CAT Challenger 35-45-55 series
- The industry's best 2-year / 2000-hour wheel warranty

### **Camoplast Midroller Specifications**

PART NUMBER	MACHINE SERIES	PART DESCRIPTION	MAY REPLACE OEM PART	TRACK WIDTH COMPATIBILITY (IN)	DIMENSIONS (OD x CONTACT WIDTH)
 4W-0232	CH 35, 45, 55	Narrow	1R1210, 1R1365	16, 18, 25, 30, 32	14 in x 4 in
 4W-0236	CH 35, 45, 55	Wide	1R1210, 1R1365	25, 30, 32	14 in x 8 in
 4W-0240	CH 65 - 95	Standard	9U3384	25, 27.5, 30, 35.5	14 in x 8 in



### ***THE INDUSTRY STANDARD***

We are the leading specialists in designing and manufacturing rubber tracks, undercarriage components and systems for a variety of markets, including agricultural, construction, industrial, defense and powersports. We apply the full power of our experience, engineering expertise, innovation skills, support and best-in-class manufacturing capabilities – not to mention the largest R&D team in the industry – to make it happen for you.

**Authorized Camoplast Distributor:**

***Make it Happen***

© 2010 Camoplast Inc. All rights reserved. TM and ® are trademarks and registered trademarks of Camoplast Inc. Camoplast Inc. reserves the right to change or discontinue any specifications, designs, features, models or accessories shown or indicated without notice. Camoplast sells only through authorized dealers and distributors. Printed in Canada CPB-0400 (2010-03/4M)

[www.camoplast.com](http://www.camoplast.com)

